



# Whistleblowing Policy

## PREAMBLE

This policy provides guidance for staff, Governors and Trustees about how to raise concerns using the Whistleblowing Policy. It states their duty to report concerns whilst providing a framework in which those concerns can be raised. It also provides guidance for Headteachers, Chairs of Governors, Chair of Board of Trustees and line managers on how to manage the investigation of such concerns and the individuals who raise them.

## SECTION 1 INTRODUCTION

### 1.1 Introduction

Most of us, during our working life, have concerns about what is happening in the workplace. Usually, these issues are easily resolved – but when they are about unlawful conduct, financial malpractice or dangers posed to people or the environment it can be difficult to know what to do next.

You may be worried about raising such concerns or you may want to keep them to yourself. Perhaps you feel the issue at hand is none of your business or that it's only a suspicion for which you have little evidence. You may feel that raising the matter would be disloyal to colleagues, governors, the Headteacher or the school. You may decide to say something but find that you have spoken to the wrong person or raised the issue in the wrong way and are not sure what to do next.

### 1.2 Purpose

This policy is designed to enable you to raise your concerns at an early stage and in the right way. As an employee of the school, it is your duty to raise these concerns. The Governors and Peak Edge Trustees believe that helping you to do so is an important part of ensuring that the school is well-run and safe. Providing the concern is genuine, the school would prefer you to raise it as soon as possible rather than waiting for proof; if it falls within the areas listed below, we ask that you do so using this procedure.

### 1.3 Application of the Policy

This Policy is intended to cover genuine concerns that are not covered by other procedures and which you think the school or Peak Edge should look into.

Such concerns include:

- Unlawful conduct
- Financial malpractice
- Causing a danger to children and young people
- Causing a danger to staff, the public or the environment
- Contravening the governing board's policies or the school's code of conduct
- Deliberate concealment of any of the above

In Appendix One, we have provided some examples of the kind of issues the Governing Board and Trustees Board would consider as malpractice or wrong-doing that could be raised under this policy. This should not, however, be regarded as a complete list – If you are in doubt about any issue, raise it.

### 1.4 Which concerns do not fall within remit of the policy?

The Whistleblowing Policy is primarily for concerns where the interests of other people or the organisation are at risk. It only applies if you are raising a concern in the public rather than your own individual interest.

If your concern is about your personal position in school or the way you as an individual have been treated, please raise it through the Grievance Procedure. A copy of this procedure is available in school.

Where a concern is raised about an individual or individuals, once the concern has been investigated under the Whistleblowing Policy, there may be a need for further investigation or action. This would take place within the framework of a different policy. Where this is the case, you will be notified that the investigation under the Whistleblowing Policy has ended.

### 1.5 Your obligation to report concerns

As an employee of the school, the code of conduct requires you to report genuine concerns of fraud, theft or unethical behaviour etc. This policy provides you with ways of doing that.

If you are concerned that a young person is at risk of harm, the guidance in the DfE's *Safeguarding Children and Safer Recruitment in Education* (2006) document and the Management of Allegations of Abuse (Schools) Policy obliges you to report your concerns. If you are concerned that a young person is being harmed or at risk of being harmed, or you have a concern about a staff member, volunteer or contractor's suitability to work with children, you should report this using the Management of Allegations of Abuse Policy. If, however, you are concerned that:

- an individual's professional practice, or
- the leadership and/or management of the school, or
- the school's policies, procedures and/or ways of working

may be undermining the safety and wellbeing of young people, or leaving them vulnerable to risk, or you are worried about the way in which safeguarding allegations have been managed, you should express these concerns through the Whistleblowing Policy.

## 1.6 Our assurances to you

### ***Your safety***

The governing board recognises that the decision to report a concern can be a difficult one to make and the school and Peak Edge are fully committed to the assurances given in this policy. If you raise a genuine concern under the Whistleblowing Policy, you will not be at risk of losing your job or suffering any form of reprisal as a result. The Governing Board and Trustee Board will not tolerate harassment, bullying or victimisation and will take action to protect you.

This protection applies not only while you are employed, but also after the working relationship has ended.

Provided you are acting in good faith, it does not matter if you are mistaken. However, if you maliciously raise a matter you know is untrue, disciplinary action may be taken against you in accordance with the school's Disciplinary Procedure.

### ***Confidentiality***

While we will consider anonymous reports, this makes it much more difficult for us to look into the matter or give you feedback. However, the Governing Board and Trustee Board recognises that you may wish to raise a concern in confidence under this policy. If you ask us to protect your identity by keeping it confidential, we will not disclose it as part of the Whistleblowing Investigation without your consent.

Please note, however, that the schools will not tolerate the harassment, bullying or victimisation of anyone raising a genuine concern.

Please also note that any confidentiality clause within any other policy, agreement or contract should not prevent you from raising a genuine public interest concern under the Whistleblowing Policy.

### ***Your right to support in meetings***

In any meetings that have a connection to your whistleblowing concern, you have the right to be accompanied by your trade union representative or a work colleague (providing they are not involved in the issue and would not be called as a witness).

These meetings might include:

- A meeting with your line-manager or other appropriate person to raise your concern.
- A meeting with an investigation officer in connection with the concern.

- Taking part as a witness in any action taken as a result of raising the concern.

Contact details of trade union representatives can be found in Appendix Four.

## 1.7 Independent advice

If you are unsure whether to use this policy, or if you want independent advice at any stage, you should contact:

- Your trade union (contact details for which are provided in Appendix Four)
- The independent charity Public Concern at Work whose lawyers are available give you free confidential advice at any point in the process. Their helpline is 020 7404 6609.

## SECTION 2 – RAISING CONCERNS

### 2.1 How to report a concern

There are a number of different ways to raise a whistleblowing concern – you can choose the one that suits you. It doesn't matter which you choose, you can be assured that a named manager will properly consider it.

Whichever way you decide to raise your concern, please ensure that you state that you are doing so under the Whistleblowing Policy. (If at any stage we feel that your concern is a grievance rather than a whistleblowing matter, we will tell you.)

Although you can raise your concern verbally, you may find it easier to do so in writing – this way, you can keep a record of what you reported as well as giving yourself the time to make sure you've included all the relevant information.

When reporting your concern, you should provide information about the background and history of your concern. Where possible, you should give names, dates and places and the reason why you are particularly concerned about the situation. If you are a member of a trade union, you may find it helpful to take advice from them about putting your concerns in writing.

There is no reason why you cannot use email to raise a whistleblowing concern. However, if you do choose to use email, please take extra care to make sure that your message is sent to the correct person and consider that due to the nature of email communication it may be read by other people. To help make sure your concerns are seen and handled quickly, mark the subject box: '*Whistleblowing – confidential – recipient only*'.

If, however, you do not wish to put your concern in writing, you can telephone or arrange to meet with the appropriate person.

## 2.2 Who to contact with your concern

### ***Your Headteacher***

If you have a concern which you believe is covered by the Whistleblowing Policy, we hope you feel able to raise it first with your immediate line manager.

This may depend, however, on the seriousness and sensitivity of the issues involved and who you think may be involved in the malpractice.

For example, if you believe that your line manager is involved, you should approach the Headteacher. If you believe the Headteacher is involved, your Chair of Governors should be approached and/or the Chief Executive Officer of Peak Edge, who will act on behalf of the Trustees.

### ***External contacts***

The school hopes this policy gives you the reassurance you need to raise such matters internally. If, however, you feel unable to raise your concern internally we would much rather you raise the matter with the appropriate agency than not at all. Provided you are acting in good faith and you have evidence to back up your concern, you can contact any of the following:

- External audit (the Audit Commission – 0844 798 3131 or 0117 975 3131)
- Relevant regulatory organisations (such as the Department of Education)
- Your solicitor
- The police
- Other bodies prescribed under the Public Interest Disclosure Act. These include, but are not limited to the Information Commissioner's Office, the Serious Fraud Office, the Environment Agency, the Health and Safety Executive.

If you do refer your concern to an individual or organisation outside the school, you need to ensure that you do not disclose confidential information. [You should, therefore, first check with Legal Services, who will give you confidential advice – you do not have to give your name if you do not wish to. You will find a contact telephone number in Appendix Four.]

## SECTION 3 – DEALING WITH YOUR CONCERN

### 3.1 How the school will handle the matter

Once you have told us of your concern, we will look into it to assess what action should be taken.

In order to protect individuals, the Governing Board and the Trustee Board, initial enquiries will be made to decide whether an investigation is appropriate and, if so, what form it should take. Concerns or allegations that fall within the scope of specific procedures (for example, child protection or discrimination issues) will normally be referred for consideration under those procedures. If your concern falls more properly within a different procedure, we will tell you.

Some concerns may be resolved without the need for an investigation.

The length of time it takes for us to respond will depend on the nature of the issue you are disclosing. If there is a safeguarding or health and safety risk, for example, we will contact you immediately. Whatever the nature of your disclosure, the governing board will write to you within at least ten working days to:

- Acknowledge that the concern has been received
- Indicate how we propose to deal with the matter
- Give an estimate of how long it will take to deal with the matter
- Tell you whether any initial enquiries have been made; and
- Tell you whether further investigations will take place, and if not, why not.

If a further investigation is required, this may involve:

- An internal investigation
- Referral to the police
- Referral to an external auditor
- An independent enquiry

The school will tell you who is handling the matter, how you can contact them and whether further assistance may be needed from you.

### 3.2 Your right to the support of a trade union representative or colleague

When any meeting is arranged to discuss your concerns, you have the right to be accompanied by a trade union representative or a colleague (who is not involved in the area of work to which the concern relates and who also who could not be called as witness).

### 3.3 Our commitment to support you through the process

The Governing Board or Trustee Board will take steps to minimise any difficulties, which you may experience as a result of raising a concern. For instance, if you are required to give evidence in criminal or disciplinary proceedings, the Governing Board or Trustee Board will advise you about the procedure.

If you are asked to attend a meeting, we will aim to give you a minimum of ten days' notice.

The Governing Board or Trustee Board accepts that you need to be assured that the matter has been properly addressed. Thus, subject to legal constraints and confidentiality, you will receive information about the outcome of any investigations.

## SECTION 4 – THE INVESTIGATION PROCEDURE

### 4.1 Verification

Concerns raised under this procedure may be resolved by the person to whom they were reported. This will be the Headteacher.

If they are not able to resolve the matter or you have raised your concern with the Chair of Governors/Chair of the Trustee Board/Chief Executive Officer, they will make initial enquiries to assess whether an investigation is required and, if so, what form that investigation should take.

If you did not raise your concerns directly with the Chair of Governors/Chair of the Trustee Board/Chief Executive Officer, unless the disclosure refers to them they will still be notified for monitoring purposes (see paragraph 4.4).

Although you are not expected to prove the truth of any allegation, you will need to demonstrate that there is a sufficient reason for expressing your concern. This policy provides protection to employees who raise issues in the genuine belief that there is serious cause for concern. If the complaint is found to be in bad faith, disciplinary action may be considered.

If it is confirmed that the Whistleblowing Procedure is the appropriate route and that an investigation is required:

- The concern will be recorded
- An Investigating Officer will be identified
- You will be told who will investigate and the likely timescale for the investigation within ten days
- 

If there is insufficient information to make a decision about the most appropriate course of action, you will be asked for more information.

If it is decided not to investigate further, you will be told what enquiries have been made and the reasons for the decision.

When any meeting is arranged to discuss your concerns, you have the right to be accompanied as outlined in paragraph 3.2.

## 4.2 The investigation

The Investigating Officer may ask you to put your concerns in writing and provide as much evidence as possible. It may also be necessary to ask you to provide a witness statement. You will have the opportunity to confirm that the information you have provided is accurate and complete before it is used in the investigation.

You will be asked to agree that the information you have provided and your name may be disclosed so that the Investigating Officer can decide how the Governing Board / Trustee Board will respond and investigate the issue.

If you do not want to disclose your identity the Investigating Officer will decide how to proceed.

The Investigating Officer may need to contact you or other witnesses during the investigation.

The investigation will be carried out as quickly as possible but the time taken will depend on the nature of the issues raised and the availability and clarity of the required information. You will be updated at 28 day intervals unless this is not practicable.

If you are required to take part in the investigation you have the right to be accompanied as set out in paragraph 3.2.

## 4.3 The outcome

The investigation will be concluded with a written report of enquiries made, the findings on the strength of the evidence and whether the substance of the allegations has been established.

Where legal and confidentiality constraints allow, you will receive information about the outcome of any investigation. If the investigation continues within the framework of another procedure, the school will, if able, inform you of this.

If, however, the provision of further information would result in the school breaching an individual's confidentiality or the law, we may not be able to you, as the person who made the disclosure, whether the investigation has continued under the framework of other policies since to do so may jeopardise the outcome of any further investigation. We will, however, inform you that the investigation is concluded under the framework of the Whistleblowing Policy.

If the investigation concludes that the allegations are not substantiated, the report will conclude whether the concerns were raised in good faith.



## 4.4 Monitoring

Within the school, a central record of all whistleblowing complaints, including dates, substantive issues, findings and outcomes will be retained by the Chair of Governors/Chair of the Trustee Board. The Chair will report as necessary to the Governing Board or Trustee Board in a way that maintains your confidentiality as far as possible.

## SECTION 5 – IF YOU ARE DISSATISFIED

If you are unhappy with our response, remember you can use the other routes detailed in this policy in paragraphs 1.7 and 2.2.

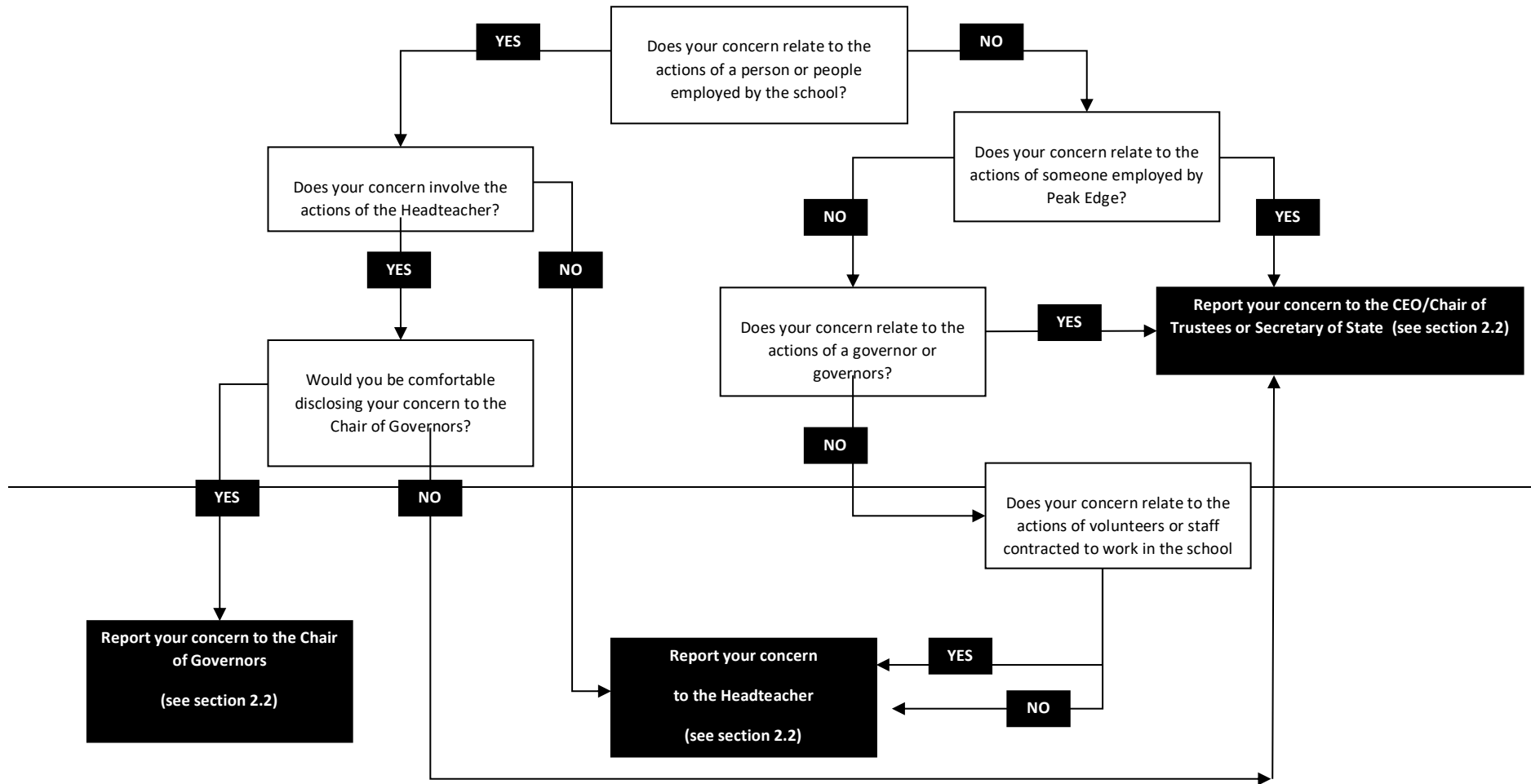
While we cannot guarantee that we will respond to all matters in the way that you might wish, we will try to handle the matter fairly and properly. By using this policy, you will help us to achieve this.

## APPENDIX ONE – EXAMPLES OF CONCERNS THAT MAY BE RAISED

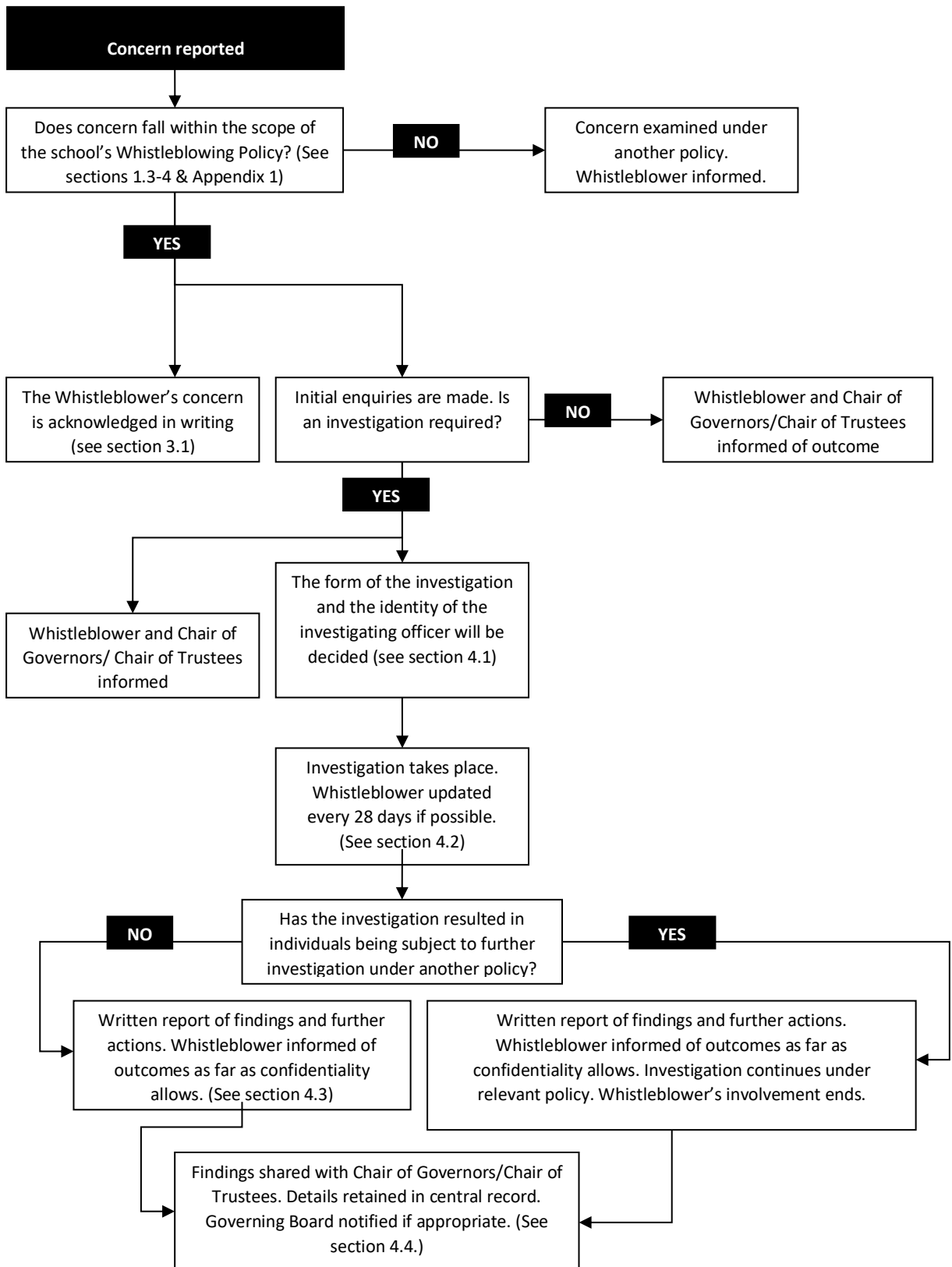
This list shows the kind of issues that may be raised under the Whistleblowing Policy. However, there may be other concerns that can be raised under the policy that are not shown here; if you are aware of such an issue, please report it.

- Poor or unprofessional practice by a member of staff or an agency that results in the service user not getting the same quality of service which is available to others.
- Children or young people being put at risk by an individual's professional practice, or the leadership and/or management of the school, or the school's policies, procedures and/or ways of working.
- Allegations of a safeguarding nature not being taken seriously or appropriately handled.
- Improper/unacceptable behaviour towards employees, volunteers, contracted workers or service users which could take the form of emotional, sexual or verbal abuse, rough handling, oppressive or discriminatory behaviour or exploitative acts for material or sexual gain.
- Any unlawful activities, whether criminal or a breach of civil law.
- Fraud, theft or corruption.
- Concerns regarding possible breaches of Health and Safety regulations.
- Harassment, discrimination, victimisation or bullying of employees, volunteers, contracted workers and/or service users.
- Leaking confidential information in respect of governing board activities or records.
- Misuse of pupil, employee, volunteer or financial data (including attainment information and personal details).
- Doing undisclosed private work which may conflict with working for the school or the Council, or which is being carried out during working time.
- Inappropriate contact with members of the public within school or Council facilities, or whilst carrying out school or Council duties outside of working time.
- Taking gifts or inducements.
- Inappropriate use of external funding or the school budget.
- Maladministration as defined by the Department of Education, Local Government Ombudsman or appropriate examination boards.
- Breach of any statutory code of practice.
- Breach of, or failure, to implement, or comply with any governing board policy.
- Misuse of school or Council assets including, but not limited to, computer hardware and software, buildings, stores, vehicles and/or equipment.

## APPENDIX TWO – REPORTING CONCERNS THROUGH THE WHISTLEBLOWING POLICY



## APPENDIX THREE – MANAGING A CONCERN THROUGH THE WHISTLEBLOWING POLICY



## APPENDIX FOUR – USEFUL CONTACTS

### For employee issues

Human Resources – ask individual school for contact details

### For educational issues

Bradfield Dungworth - Helen Adams, Headteacher	0114 2851338
Loxley – James Connolly, Executive Headteacher	014 2344510
Nook Lane – Steve Arbon-Davis, Headteacher	0114 2341097
Oughtibridge – James Connolly, Executive Headteacher	0114 2863167
Stannington – Sarah Binns, Headteacher	0114 2344401
Wharnccliffe Side – Matt Gaughan, Headteacher	0114 2862379
Peak Edge – Jim Dugmore, CEO	0114 2863167

### For governance issues

Bradfield Dungworth – Andrew Beckerman, Chair of LGB	0114 2851338
Loxley – Stephen Bennett, Chair of LGB	014 2344510
Nook Lane – D Shaw, Chair of LGB	0114 2341097
Oughtibridge – Dave Cates, Chair of LGB	0114 2863167
Stannington – Liz Tunnard, Chair of LGB	0114 2344401
Stocksbridge NI – Matt Collins, Chair of LGB	0114 288 3109
Wharnccliffe Side – Sue Brookes, Chair of LGB	0114 2862379
Peak Edge – Dave Cates, Chair of Trustee Board	0114 2863167

### For financial issues

Yvette Hawksworth, COO	0114 2863167
------------------------	--------------

### For child safety issues

Local Area Designated Officer	0114 2734934
-------------------------------	--------------

### Trade Union representatives

ASCL	0116 2991122
ATL	07748 351775

GMB	0845 3377777
NAHT	0300 3030333
NASUWT	0114 2757015
NUT	0870 2407714
Unison	0114 2736307
Unite	0114 3210702